

Unite™ Bonding Adhesive



- No-mix adhesive for direct bonding
- Available in easy-to-use pre-loaded syringes
- Strong, reliable bond
- Fast-setting

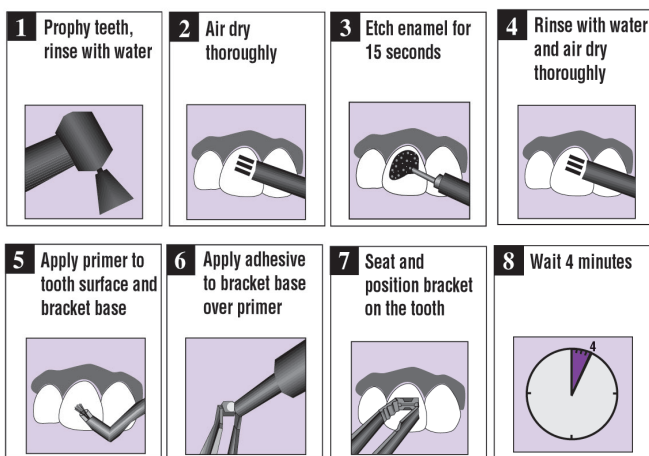
For a strong, reliable bond, ease of handling and rapid placement, your industry-proven choice is Unite™ Bonding Adhesive from 3M.

Formulated for strength, Unite adhesive allows ample working time yet sets quickly, allowing the archwire to be inserted in as little as four minutes.

Unite adhesive is thixotropic – it will not run, yet it flows readily into mesh or undercut bonding bases to form a strong base-to-enamel bond.

Used worldwide, Unite adhesive is supplied in pre-loaded syringe dispensers. For easier ordering, a complete Unite adhesive kit provides all the materials you need for the bonding process.

Instructions for Use – Syringe



Ordering Information

Unite™ Bonding Adhesive Syringe Kit

3 adhesive syringes (5g each)
15 ml primer
1 dispensing pad, 3" x 2 1/2"
1 brush holder
60 brushes
712-012

Individual Components

Liquid Primer
For Unite adhesive
15ml bottle
704-055

Brush Holder
4/pack
704-046

Gel Etch Syringe Tips
25/pack
712-037

Unite Adhesive
3 syringes, 5g each, 3/pack
704-048

Brush Tips
60/pack x 2
704-047

Etching Gel (Blue Tint)
37% phosphoric acid
9ml bottle
704-060